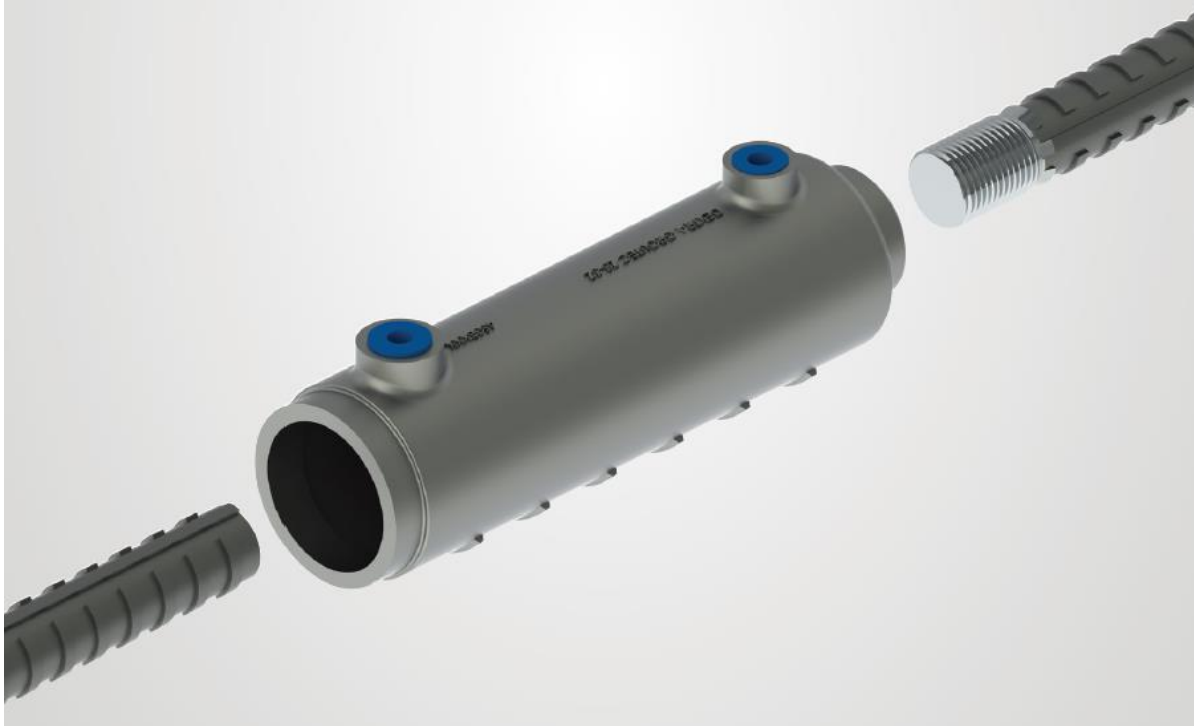


# *Groutec UK Project References*





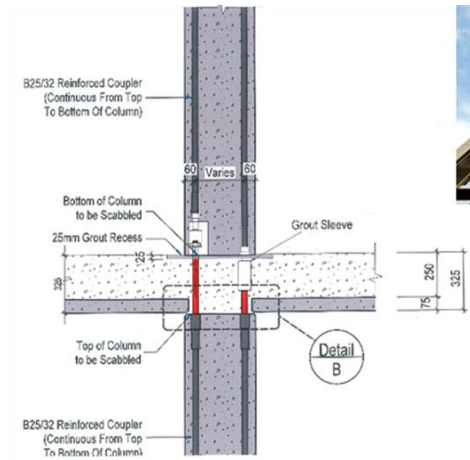
**1. 2015 Battersea Phase 1 – Byrne Brothers**



2000 no. Groutec for diameter 25mm rebar



## 2. 2016 Elephant Road - Explore/Expanded



400 no. Groutec for 32mm diameter rebar

## 3. 2016 London Wall Place – Byrne Brothers



300 no. Groutec for 32mm diameter rebar





**4. 2016/2017 Long Lane Residential Project, London – Oranmore**



20mm, 25mm and 32mm Groutec couplers, 575 no. total

**5. 2017 Westfield ph2 – Byrne Brothers**



1450 no. Groutec for 25mm diameter rebar – under delivery