



RFA-TECH

RES-TECH PSF410



Product Data Sheet

Application and Use

RES-TECH PSF410 is a two-part chemical anchoring resin designed to anchor threaded rods and rebar in concrete and also has the advantage of European Approval for use in Masonry blocks according to the ETAG 029.

This sophisticated chemical anchoring product is a fast curing injection system, delivered through a mixing nozzle directly into the fixing hole. The cartridges are extruded using either a specially designed fixing tool, or a silicone tool.

Key Benefits

Medium and heavy duty load applications • Good durability
Ideal for indoor and outdoor usage.

Typical Data

Gelling and Curing Times

** Cartridge temperature must be at least 20°C

Base Material Temperature	35	25	15	5	-5	-10**
Typical Gel Time (mins)	3	5	9	20	40	50
Min. Load Time (mins)	20	30	60	90	180	240

Typical Tensile Performance at Standard Embedment Depth

Concrete, fck, cube = 25N/mm ² (C20/25) 5.8 Grade Studding								
Size	Characteristic Resistance (kN)		Recommended Load (kN)		Spacing (mm)	Hole Ø Drill (mm)	Hole Ø In Fixing (mm)	Setting Depth (mm)
	Tension (Nrk)	Shear (Vrk)	Tension (Nrec)	Shear (Vrec)				
M8	19.0	9.0	9.1	5.1	160	10	9	80
M10	26.3	15.0	8.7	8.6	200	12	11	90
M12	36.3	21.0	12.0	12.0	240	14	13	110
M16	52.2	39.0	17.3	22.3	320	18	17	125
M20	82.4	61.0	27.2	34.9	400	24	22	170
M24	102.9	88.0	34.0	50.3	480	28	26	210
M30	-	-	-	-	-	-	-	-

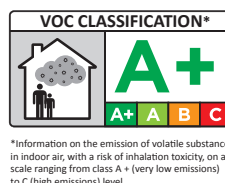
The information and data given is based on our own experience, research and testing and is believed to be reliable and accurate. However, as we cannot know the varied uses to which its products may be applied, or the methods of application used, no warranty as to the fitness or suitability of its products is given or implied. It is the users responsibility to determine suitability of use. For further information please contact our Technical department.



RFA-TECH

RES-TECH PSF410

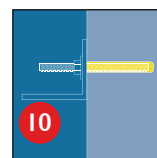
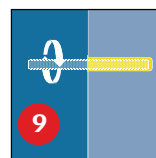
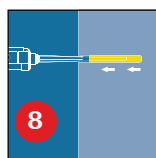
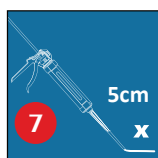
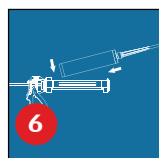
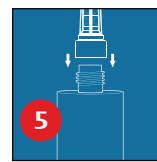
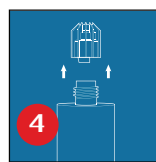
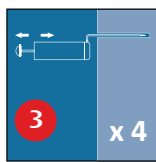
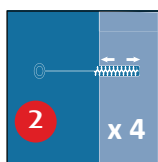
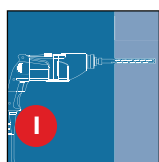
Approvals and Certifications



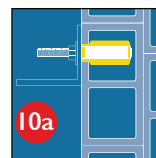
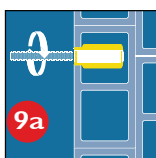
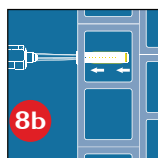
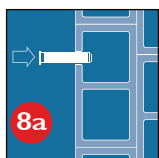
Imperial College
London
Consultants

Installations

Solid substrates



Hollow wall



For further information, refer to the Technical Data Sheet.

Sizes

410ml Co-axial Cartridge all supplied with mixers.

Handling and Storage

This product should be stored between +5°C & +25°C.

Avoid Direct Sunlight

The Shelf life of the product is 12 months from the manufacture date.