



RFA-TECH

RES-TECH VNSF410



Product Data Sheet

Application and Use

RES VNSF410 is a two-part chemical anchoring resin designed to anchor threaded rods and rebar in concrete and also has the advantage of European Approval for use in cracked and non-cracked concrete, as well as coverage for rebar under TR029 and TR023 (post installed rebar)

This sophisticated chemical anchoring product is a fast curing injection system, delivered through a mixing nozzle directly into the fixing hole. The cartridges are extruded using either a specially designed fixing tool, or a silicone tool.

Key Benefits

European Technical Approval • For use in wet holes and underwater • Good chemical resistance • High and critical load applications • High durability • Tested for 50 year anchor life under the ETA • Fire Rated.

Typical Data

Gelling and Curing Times

** Cartridge temperature must be at least 20°C

Base Material Temperature	35	25	15	5	-5	-10**
Typical Gel Time (mins)	3	5	9	20	40	50
Min. Load Time (mins)	20	30	60	90	180	240

Typical Tensile Performance at Standard Embedment Depth

Concrete, fck, cube = 25N/mm ² (C20/25) 5.8 Grade Studding								
Size	Characteristic Resistance (kN)		Recommended Load (kN)		Spacing (mm)	Hole Ø Drill (mm)	Hole Ø In Fixing (mm)	Setting Depth (mm)
	Tension (Nrk)	Shear (Vrk)	Tension (Nrec)	Shear (Vrec)				
M8	19.0	9.0	9.1	5.1	160	10	9	80
M10	30.2	15.0	14.4	8.6	200	12	11	90
M12	43.8	21.0	20.9	12.0	240	14	13	110
M16	67.8	39.0	32.3	22.3	320	18	17	125
M20	104.6	61.0	49.9	34.9	400	24	22	170
M24	133.0	88.0	63.3	50.3	480	28	26	210
M30	182.0	142.5	86.7	81.4	525	35	33	280

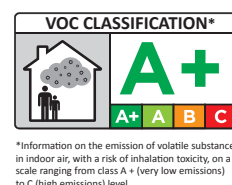
The information and data given is based on our own experience, research and testing and is believed to be reliable and accurate. However, as we cannot know the varied uses to which its products may be applied, or the methods of application used, no warranty as to the fitness or suitability of its products is given or implied. It is the users responsibility to determine suitability of use. For further information please contact our Technical department.



RFA-TECH

RES-TECH VNSF410

Approvals and Certifications

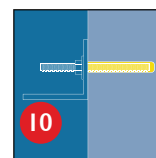
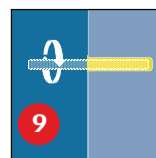
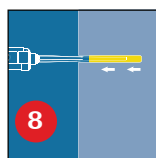
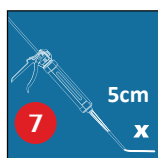
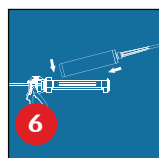
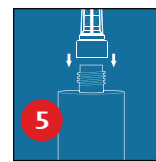
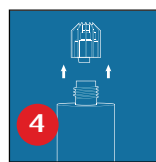
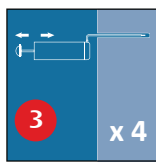
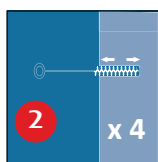
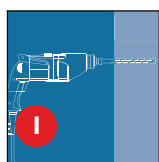


*Information on the emission of volatile substances in indoor air, with a risk of inhalation toxicity, on a scale ranging from class A+ (very low emissions) to C (high emissions) level.

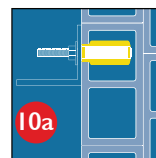
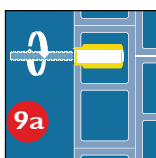
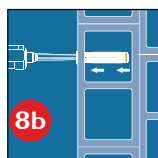
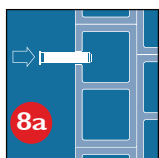
**BS6920 Approved
FOR USE WITH
POTABLE WATER**

Installations

Solid substrates



Hollow wall



For further information, see the Technical Data Sheet

Sizes

410ml Co-axial Cartridge, supplied with mixers.

Handling and Storage

This product should be stored between +5°C & +25°C.

Avoid Direct Sunlight

The Shelf life of the product is 12 months from the manufacture date.