



RFA-TECH

RES-TECH PE500



Product Data Sheet

Application and Use

RES-TECH PE500 is a two-part chemical anchoring resin designed to anchor threaded rods and rebar in concrete and also has the advantage of two European Technical Approvals for post-installed rebar and cracked and non-cracked concrete plus BS6920 Testing for use in potable water, and fire approval.

This sophisticated chemical anchoring product is a fast curing injection system, delivered through a mixing nozzle directly into the fixing hole. The cartridges are extruded using either a specially designed fixing tool, or a silicone tool.

Key Benefits

Solvent free odourless resin, no shrinkage • Ideal for use with diamond drilled holes • Ideal for rebar usage with large diameters and embedment • High durability • Used in wet holes and underwater • Longer working times

Typical Data

Gelling and Curing Times

Base Material Temperature	40	35	25	15	5
Typical Gel Time (mins)	10	16	25	60	120
Min. Load Time (mins)	150	240	480	1200	3000

Typical Tensile Performance at Standard Embedment Depth

Concrete, fck, cube = 25N/mm ² (C20/25) 5.8 Grade Studding								
Size	Characteristic Resistance (kN)		Recommended Load (kN)		Spacing	Hole Ø Drill	Hole Ø In Fixing	Setting Depth
	Tension (Nrk)	Shear (Vrk)	Tension (Nrec)	Shear (Vrec)	(mm)	(mm)	(mm)	(mm)
M8	19.0	9.0	9.1	5.1	160	10	9	80
M10	30.2	15.0	14.4	8.6	200	12	11	90
M12	43.8	21.0	20.9	12.0	240	14	13	110
M16	81.6	39.0	38.8	22.3	320	18	17	125
M20	127.4	61.0	60.7	34.9	400	24	22	170
M24	183.6	88.0	87.4	50.3	480	28	26	210
M30	280.0	142.5	133.3	81.4	525	35	33	280

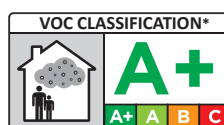
The information and data given is based on our own experience, research and testing and is believed to be reliable and accurate. However, as we cannot know the varied uses to which its products may be applied, or the methods of application used, no warranty as to the fitness or suitability of its products is given or implied. It is the users responsibility to determine suitability of use. For further information please contact our Technical department.



RFA-TECH

RES-TECH PE500

Approvals and Certifications



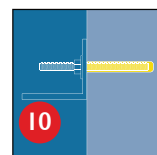
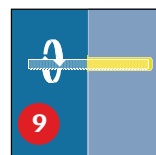
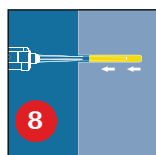
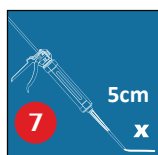
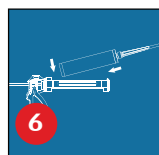
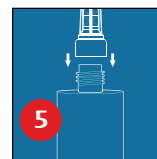
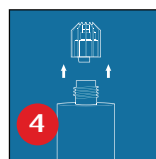
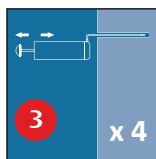
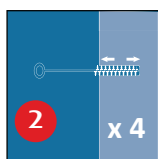
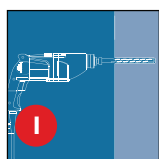
*Information on the emission of volatile substances in indoor air, with a risk of inhalation toxicity, on a scale ranging from class A+ (very low emissions) to C (high emissions) level.

**BS6920 Approved
FOR USE WITH
POTABLE WATER**



Installations

Solid substrates



Not for use in hollow wall applications.

For further information please refer to the Technical Data Sheet

Sizes

585ml Side by side cartridge. All supplied with mixer.

Handling and Storage

This product should be stored between +5°C & +25°C.

Avoid Direct Sunlight

The Shelf life of the product is 24 months from the manufacture date.