



Sefton Tower Development

Liverpool

Development

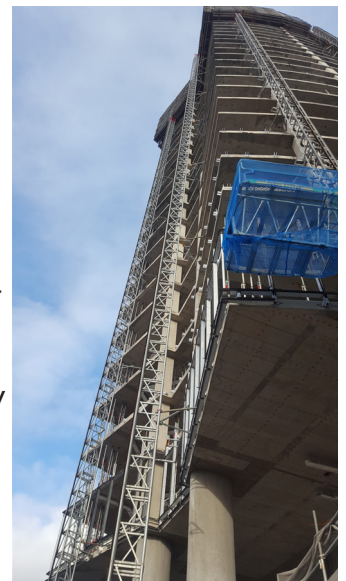
The initial work will include our Startabox for the 20 story building on the Liverpool Waterfront.

The Project

Working closely with the developer Vermont Construction and their design team on Sefton Street Liverpool, RFA-Tech have supplied Startabox CARES approved continuity strip and Haz CE marked cast in channel. The Startabox was supplied in bespoke units supplemented by specially fabricated lengths where necessary to avoid on site cutting and to ensure speed of construction.



Manufactured in the UK allowed standard and special lengths to be supplied to site as J.I.T. deliveries. In addition careful planning between the various contractors/sub-contractors and RFA-Tech achieved accurate and time efficient supply of channel and T-bolts.



RFA-Tech Startabox, with rebar manufactured in the UK at our own mill uses 98% recycled steel, and is produced at our Sheffield factory allowing efficient delivery to site, meeting all construction requirements.